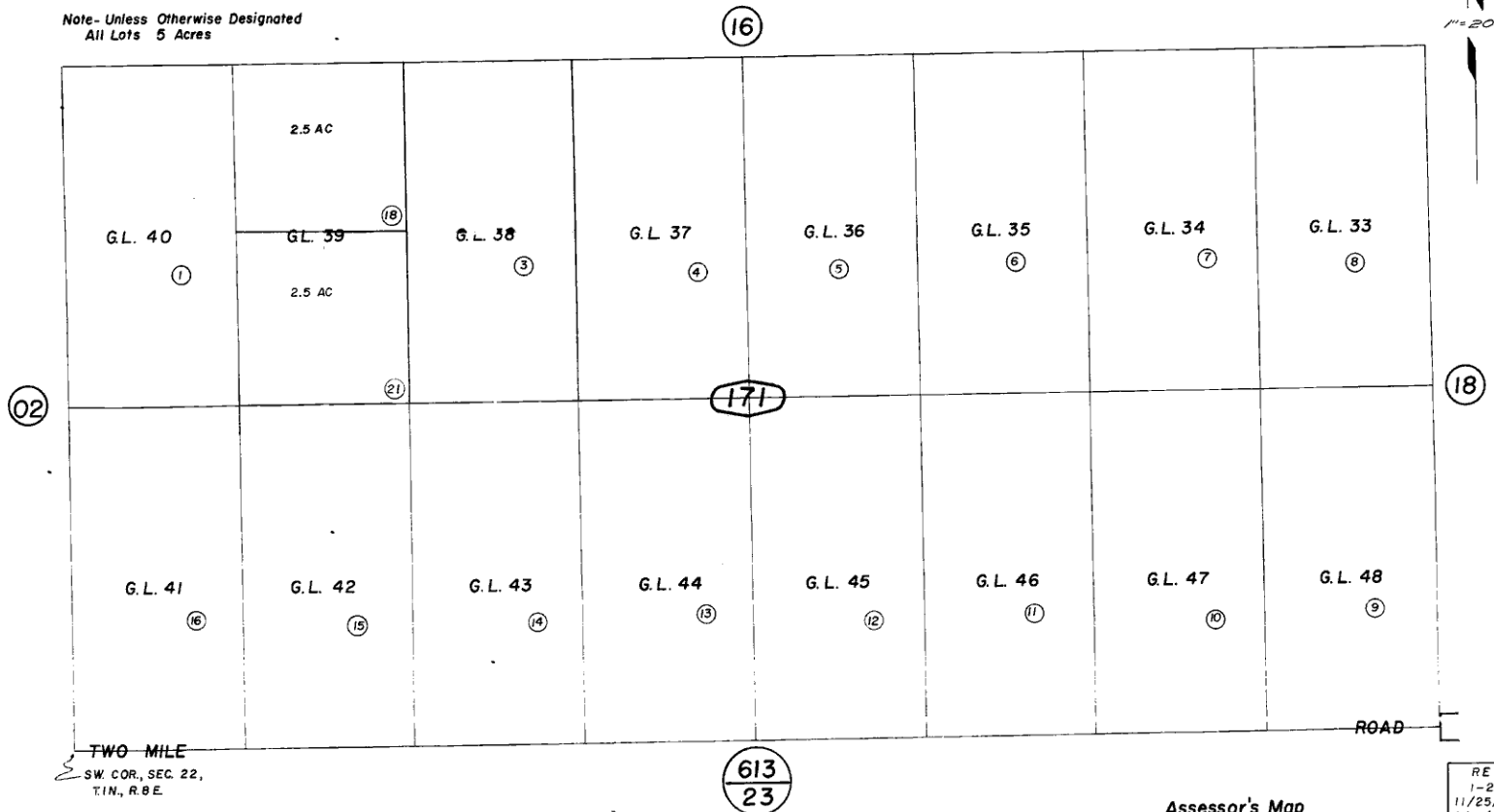




S. 1/2, SW. 1/4, Sec. 22, T.1N., R. 8 E., S.B.B. & M.

City of Twentynine Palms 612- 17  
Tax Rate Area  
19001

Note- Unless Otherwise Designated  
All Lots 5 Acres



TWO MILE  
SW. COR., SEC. 22,  
T.1N., R.8E.

613  
23

Note- Assessor's Blk. & Lot  
Numbers Shown in Circles

Assessor's Map  
Book 612 Page 17  
San Bernardino County

REVISED  
1-23-68  
11/25/74 RR  
6/14/94 RR

April 1960